

Nau mai, Haere mai - Welcome to Tūi Rua 2025!

We are so excited to be your kaiako for 2025! We hope you have had an amazing holiday creating special memories with your whānau. As your kaiako, we look forward to encouraging and nurturing your Hauora (Health & Wellbeing), and to enable you to thrive on your learning journey here at Te Ao Mārama. We look forward to seeing you take risks, accept challenges and be your best self! Together, we will develop our whanaungatanga (relationships), where we will work as a collaborative team and awahi (support) each other.

In 2025, Tūi Rua will include our new Bilingual Te Reo Māori class, named Te Puāwaitanga o te Rito, meaning "the blossoming of the flax shoot."

In Māori tradition, te rito (central shoot of the harakeke/flax plant) represents the tamariki (children), surrounded and protected by the outer leaves, which symbolise whānau, community, and teachers. As te rito grows, it blossoms into its full potential, supported by those around it.

Ananiah House will be the kaiako/teacher of this class, and both Whaea Sarah's will teach regular English medium classes. All 3 classes will work together for Literacy and Mathematics with children learning in English.

For Te Reo Māori and kaupapa Māori learning, the bilingual class will have dedicated time to focus on these areas in depth.

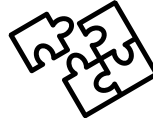
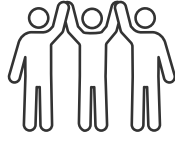
We have spent considerable time working out how this class will operate, and our approach will foster a sense of unity across all 3 classes while celebrating and supporting the unique strengths of our bilingual programme.



*"Ko te manu e kai ana i te miro nōnā te ngahere.
ko te manu e kai ana i te mātauranga nōnā te ao."*

The bird that eats the Miro berry owns the forest, the bird that feasts on knowledge owns the world.

Your 2025 Kaiako



WHAEA SARAH

(Sarah S/Hera)

Kia ora e te whānau.
Ko Sarah Shearer tōku ingoa.

I am excited to be joining you for my third year at Te Ao Mārama Kura (school) but have been teaching for over 20 years. I look forward to meeting you all and working with your tamaiti/tamariki (child/children) this year.

I grew up in the King Country on a farm but have lived in Kirikiriroa for many years now. I enjoy being active, playing squash (a new hobby), latin dancing, water and adventures, travel, the beach (Whangamatā), and most of all, creating memories with my family of two children, both 13 and 15.

I know that we will have a super year together!



MATUA ANANIAH

Kia ora e te whānau.
Ko Ananiah House tōku ingoa.

I am super excited to be joining the Te Ao Mārama whānau i tēnei tau. I am as excited to be able to teach ngā tamariki in Tūi Rua and get to know you all.

I grew up in Matawai, a little town on the way to Gisborne. I have spent much of my holidays with my family in Gisborne. I love the beach and my cat, Paul.

He tino hiamō au ki te timata me hangaia tētahi momo akomanga hou ki tēnei kura. Ngā mihi mō tō koutou awhina.



WHAEA SARAH

(Sarah C)

Kia ora e te whānau!
Ko Sarah Corkill tōku ingoa.

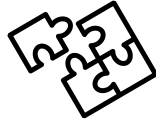
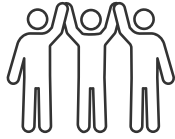
It is such a privilege to teach at Te Ao Mārama School and even more so to have been a foundation member here. I have been teaching for 16 years across all age groups and love what I do!

I grew up in Kerikeri in the Bay of Islands. I enjoy swimming, running, water sports, traveling, being at the beach and spending time with family and friends.

I have three children (two at Te Ao Mārama) and my husband Andrew is on the Board of Trustees. I look forward to meeting you!

SUPPORT TEAM

Our Support Team



WHAEA LOU

Whaea Lou will be in Tūi Rua every Friday for Whaea Sarah Corkill (as Sarah looks after her 3-year old on this day).



WHAEA LEILA

Whaea Leila will be working in Tūi Rua every Thursday to release Matua Ananiah.



WHAEA SANDRA

Whaea Sandra will be in Tūi Rua every Wednesday supporting Matua Ananiah.



WHAEA HAYLEY

Whaea Hayley will be working as Literacy Support in our space.



WHAEA LUCY

Whaea Lucy will be working as Literacy and Numeracy Support in our space.



WHAEA BUFFY

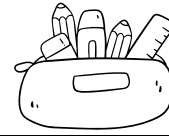
Whaea Buffy will be working in our space as a Kaiārahi i te reo Māori, supporting Matua Ananiah.

HELPFUL INFO!

Role of the Whānau Teacher



Your child has been placed within a Whānau Group for 2025. They will start each day with this kaiako and this teacher is your main point of contact. Please feel free to come and see us before or after school. If you have any queries that require more time, please book in a time with us. 😊



Stationery

To make this easy for you, we have teamed up with OfficeMax MySchool to have our stationery requirement lists loaded onto myschool.co.nz.

Once on the [OfficeMax site](https://www.officemax.co.nz), select our school, click 'start' on view the Requirements List, select your child's class and follow the instructions on the website.

Find: Tūī Rua - Whaea Sarah C, Matua Ananiah, Whaea Sarah S (Hera)
- Your child's Whānau Teacher.

PLEASE NAME ALL OF YOUR CHILD'S STATIONERY

Your child will be individually responsible for their own stationery, which will be kept in their tray. We will hold on to extra pieces and hand this out throughout the year - please bring ALL of it to school when it is ready.

Book Bags

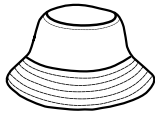


Please ensure that your child is bringing their book bag to school every day. Literacy Workshops are happening each day, Monday to Thursday. Without a book bag, your child will not be able to take books home. We will store book bags at school until we begin to use these.



HELPFUL INFO!

Sun Safety



In Terms 1 and 4, all children MUST wear a hat outside. Please ensure your child has a named hat in their bag every day. A spare hat could also be kept at school in their personal tote tray. We have a supply of sunblock in Tūī Rua but ask that children please come to school with this already applied.



What to Bring to School

Please bring every day:

- A lunch box packed with a healthy snack (fruits and vegetables are ideal), morning tea and lunch – plenty of food to fuel you! (Please leave lollies at home).
- A water bottle
- A named hat (you are welcome to bring a spare to leave at school)
- A book bag
- A big smile and positive attitude! 😊

Please ensure all toys and valuables are kept at home.

Birthdays



We already have a birthday ritual in place so that your child has the opportunity to have their moment and be celebrated. Therefore, please refrain from bringing in any lollies or treats to share. We have food allergies in our class and need to keep our tamariki safe. Thank you for your understanding.



Staying Up-To-Date

For further information about our school and to keep up-to-date, please see our Facebook page or visit www.teaomārama.school.nz

HELPFUL INFO!



BYOD – Bring Your Own Devices / Ngā Rorohiko

Tūi Rua is a B.Y.O.D. (Bring Your Own Device) learning community. The use of technology is vital in our ever evolving world and we want to prepare our students with the technical skills they will need. The use of devices will be an integral part of our learning community and daily programme. If you are able to supply your child with a personal device (laptop, chromebook, iPad), we would really appreciate it.

These devices will come to school and return home each day. We ask that chargers are left at home and that students charge their devices each night before bringing them to school.

Please label your child's device with their first and last name clearly. B.Y.O.D. is optional (but recommended). We will also look to provide some school devices to our learners but this is limited.

A User Agreement will be coming home with your child in the first couple of weeks, so look out for that. We will also spend time in class creating clear expectations around safe use of devices and the internet.

We also ask that if your child is bringing a device, that they start bringing these to school from

Week 3: Monday 17th February

Note: Our Year 3 students will be provided with a device when needed.

For more information, please feel free to come in and chat, or refer to the B.Y.O.D newsletter, or email: frank@teaomarama.school.nz or visit our school website.

<https://www.teaomarama.school.nz/13/pages/34-digital-technology-byod>



Home Learning

Our school does not set formal homework each week but we will share some ideas for how you can help at home. These will be shared later this term.

Once Guided Reading is up and running, your child will start to bring home readers too. These **MUST** go home in a book bag. No book bag, no reader. We ask that your child's book bag comes to school daily so readers can be read both at home and school.

We will also be sharing spelling and handwriting focuses that you can also work on at home to further promote and reinforce learning at school if you wish.

OUR LEARNING

Term 1 Focuses



The Magic Paintbrush!

This term, our main overarching inquiry focus will be around a story called, 'The Magic Paintbrush'. This story is a popular traditional legend often told in China. It is a story that explores the importance of showing kindness and how this will always shine through and win. This story lends itself to a range of curriculum areas too.

Inquiry - Pākiki (Play Provocations)

For our Inquiry (Pākiki - Play Provocations), we will focus on Health, Technology, Social Science and Te Ao Māori.

Health: We will explore the concept 'Pay it Forward' and 'bucket filling'. Children will then focus on ways that we can do this through our words and actions.

Social Science: We will explore the seven continents and identify the continents that China and New Zealand belong to. We will read other traditional stories (Purākau) while discussing their significance.

Technology: We will explore and design boats and bridges.

Te Ao Māori: We will explore Te Marae, what a marae is, its significance and importance and we will be visiting Hukanui Marae as well.



P.E. (Kori Tinana) / Health (Hauora)

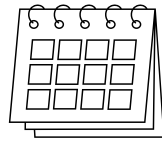
Every fortnight, we have an overarching theme that we focus on. We will then integrate this theme into our learning as well as Physical Education programme. Our focus themes this term will be:

- Approaching and joining in
- Including others
- Being a good winner
- Being a good loser

Over a fortnight, we unpack what the skill is, why it's important and delve into the dos and don'ts of actioning a given skill.

WHAT'S ON?

Looking Ahead:

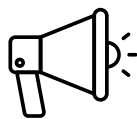


Term 1 Dates



Date	What's On
28 January	Class Placements for 2025 advised to families (<i>via email</i>)
28 January	School Tour - <i>new families for 2025 - 9am</i>
31 January	Meet the Teacher drop-in sessions (1.00-3.00pm)
3 February	First day - Term 1 Begins
3 February	Pōwhiri to welcome new families/students - 9.00am
6 February	Waitangi Day (Public Holiday - school closed)
11 February	Hui-ā-whānau (Parent - Teacher information meetings)
10-12 March	Hukanui Marae Trips
11 April	Staff Only Day - Government approved curriculum focus day
11 April	Last Day of Term 1

Stay in Touch :



Ananiah House
ananiah@teaomarama.school.nz



Sarah Shearer
sarahs@teaomarama.school.nz



Sarah Corkill
sarah@teaomarama.school.nz



Te Ao Mārama
(07) 595 0595

"He aha te mea nui o te ao?
What is the most important
thing in the world?

He tangata. he tangata. he
tangata."

It is the people,
it is the people,
it is the people.

Maori Proverb