



# Pūkeko Rua News!



Kia ora e te whānau, we have had such a great year so far and our tamariki have engaged in many new learning opportunities while making new friends and connections. We are excited about our programme for term 4 as we continue to support our Pūkeko Rua tamariki (children) to grow and learn

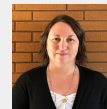
Date	What's On
14 October	First Day of Term 4
14 October	Pōwhiri for new students and families - 9.00am
22 October	Parent Info Evening - Digital Citizenship (John Parsons)
25 October	Staff Only Day - <i>school closed</i>
28 October	Labour Day Public Holiday - <i>school closed</i>
29 October - 1 November	Scholastic Book Fair
1 November	Nearest & Dearest Day (9.00-11.00am)
4-6 November	Kāhu Camp - Tōtara Springs
15 November	Tūi Tahī Day Camp - Lakewood Lodge
21-22 November	Tūi Rua Camp - Lakewood Lodge
27-28 November	Hui-ā-whānau (parent-student-teacher meetings)
4 December	Christmas in the Park (5.00pm)
13 December	Last Day of Term 4 (12.45pm finish)



[teresa@teomarama.school.nz](mailto:teresa@teomarama.school.nz)



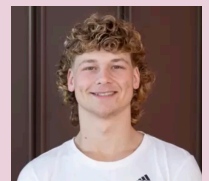
[linda@teomarama.school.nz](mailto:linda@teomarama.school.nz)



[sara@teomarama.school.nz](mailto:sara@teomarama.school.nz)



## Extra Support people in Pūkeko rua for term 4



Amy

Debra

Andrea

Rainy

Josh

## Gentle reminders...

Please remember to support your tamaiti (child) in bringing their book bag each day to transport readers back and forth. Readers are unable to be sent home unless your child has their book bag.

We appreciate your assistance in helping your tamaiti (child) to develop their reading progress and confidence by listening to their weekly home reader, or talking through the activities in the back of the book.

## Upcoming Birthdays...

As we realise birthdays are starting to happen, we ask families not to bring in cakes or lollies, due to allergies and family food preferences. We will acknowledge and celebrate each birthday in our own Pūkeko way

**Spring/Summer Considerations** With the weather warming up, please consider sending a hat to school for your child, and also apply sunscreen in the morning. We have sunscreen in class for reapplication throughout the

Please name clothing and regularly check the lost property. Please continue to send a spare change of clothes with your child. Shoes that your child can manage independently are greatly appreciated.

We look forward to having an amazing term!