

# KĀHU RUA TERM ONE 2024



“Mā te huruhuru ka rere te manu”  
Creating opportunities for our learners to soar



## Important Information:

### Communication:

Nau mai haere mai e te whānau o Kāhu Rua. We are excited about you joining us in Kāhu Rua this year. There will be many new learning opportunities and we can't wait to share these with you. Our website and Facebook page have useful information and frequently asked questions that may help answer any queries you may have.

Please head to  
[www.teaomarama.school.nz](http://www.teaomarama.school.nz)

## Stationery

To make this easy for you, we have teamed up with OfficeMax MySchool to have our stationery requirements lists loaded onto [myschool.co.nz](http://myschool.co.nz). Once on the OfficeMax site, select our school, click 'start' on view the Requirements List, select your child's class, and follow the instructions on the website.

## Meet the team



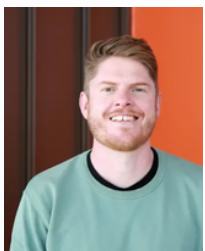
**Olivia Hotter**



**Nikki McAskie**



**Kasey Young**



**Greg Pickering**

### Release Teachers



**Rebecca Board**

Your child has a whānau teacher who they begin each day with and this is your first point of contact. Please feel free to come in and chat to us if you have any queries or just to come in and say hello.

Matua Greg will be in for Whaea Kasey every Wednesday and Whaea Rebecca will be in for Miss Olivia every second Friday, starting in week 1.



[olivia@teaomarama.school.nz](mailto:olivia@teaomarama.school.nz)



[nikki@teaomarama.school.nz](mailto:nikki@teaomarama.school.nz)



[kasey@teaomarama.school.nz](mailto:kasey@teaomarama.school.nz)

We are also lucky to have the assistance of our talented ILA's Hayley, Lucy and Deborah. They will offer extra support in a variety of learning areas.

## Reminders about each day

In Terms 1 and 4, all children are expected to wear a hat outside. Please ensure your child has a named hat in their bag every day. A spare hat could also be kept at school in their personal tote tray. We also encourage children to come to school with sunblock already applied.

Children can bring a named water bottle. Please bring enough food/snacks to ensure your child has enough to eat for three eating times.

Healthy snack, morning tea, and lunch.

Please have devices charged and placed on the shelves at the beginning of each day.

We love to celebrate your child's birthday alongside them, but we kindly ask that you do not send your child to school with lollies to share with others due to the large number of tamariki and dietary needs in our space.

## B.Y.O.D

B.Y.O.D (Bring your own device) is an integral part of the learning philosophy of Kāhu Rua.

As your child will be a student of Kāhu Rua in 2023, we ask that you consider supporting your child with a device.

If you wish to learn more about BYOD, check out our [school website](#) and look for the tab "Digital Technologies and BYOD".

A document will be sent home on the first day of school and we ask that this is signed and returned ASAP!

## Upcoming events:

Term Dates 2024	
Date	What's On
23 <sup>rd</sup> January	Class Placements for 2024 advised via email
24 <sup>th</sup> & 25 <sup>th</sup> January	Staff Only Days
25 <sup>th</sup> January	School Tour - <i>New families for 2024</i> - 1pm
25 <sup>th</sup> January	Optional 'Meet the Teacher drop-in' session - 1pm-3pm
<b>Tues 30<sup>th</sup> January</b>	<b>First day - Term One begins,</b> Pōwhiri welcome for new families/students
<b>Tues 6<sup>th</sup> February</b>	<b>Waitangi Day Public holiday - School Closed</b>
Tues 13 <sup>th</sup> February	Hui-ā-whānau (Student/Parent/Teacher connects)
Mon 19 <sup>th</sup> February	Transport Safety Week - Kids on Bikes, Ruben the Road Safety Bear
29 <sup>th</sup> February	New Parent - drinks and nibbles
<b>29<sup>th</sup> March</b>	<b>Good Friday</b>
<b>1<sup>st</sup> April</b>	<b>Easter Monday</b>
<b>2<sup>nd</sup> April</b>	<b>Easter Tuesday (note: this is a school holiday for all NZ schools)</b>
12 <sup>th</sup> April	Last Day of Term 1

## Meet the teacher

On Thursday 25th January please feel free to come into school and meet us from 1-3pm. Kāhu Rua is upstairs closest to the field. The Duck Island ice cream truck will be available for you to purchase a sweet treat from if you wish.

