

## Nau mai haere mai Kererū Tahi! Welcome to the Kererū Tahi Whānau!

We hope you have had a lovely break and are looking forward to Term 1 in Kererū Tahi. We are really excited about you being a part of our Kererū Tahi learning community this year. We look forward to building relationships with you while supporting and encouraging you in your learning journey.

### Meet your Kaiako...



**Whaea Teresa**

Kia ora koutou!  
After a wonderful summer break enjoying our fabulous Aotearoa beaches with family and friends, I am looking forward to 2025 in the Kererū Tahi Learning Space.  
I have many years of teaching experience working predominantly in the Junior School. My husband and I have 3 children. Two at RJHS and our eldest at RHS.  
I look forward to meeting you and getting to know you all! 😊



**Whaea Sara**

Kia ora, I am really looking forward to the year ahead after spending lots of my holiday at the beach or home with family and friends.  
I am a mother of four, Jasmine, Phoenix, Boe and Jett, we live just out of Hamilton with our dog Quinn.  
We currently spend lots of our time renovating and love going to the beach or just being at home,  
I am looking forward to seeing you all again and meeting a few new friends in 2025 😊



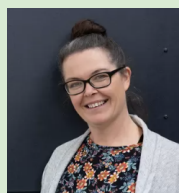
**Whaea Donna**

Kia ora, I'm Donna!  
I grew up in Kawerau and studied at Waikato University. My husband Jason and I have three amazing children and two beautiful fluffy cats, Emmy & Ollie. I love spending time with my family, going to the beach, reading and art & craft.  
I'm looking forward to a great year of learning and fun with you!

**Meet our amazing Inclusive Learning Assistants who will also be working with your Tamariki and supporting them while they are learning.**



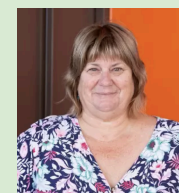
Debbie



Amy



Andrea



Debra



# A little bit of information...

Kererū Tahi is located in Kererū, at the end nearest to Pūkeko. We are a group of Year 1 & 2 students.



## When does school officially start?

We look forward to meeting you on our first day of school, Monday the 3rd February 2025.

Our learning space opens at 8:20am onwards for an 8.40am start.

## How is the day structured?

8:20 - Families and students welcome in learning spaces

8:40 - Whānau Time

9:00 - Block 1 (including Snack time)

10:35 - Outside play (whole school)

11:00 - Block 2 (starting with Morning Tea)

12:45 - Outside play (whole school)

1:25 - Block 3 (starting with Lunch)

2:20 - Whānau Time

2:30 - Finish



## Term 1 Dates

Date	What's On
28 January	Class Placements for 2025 advised to families (via email)
28 January	School Tour - new families for 2025 - 9am
31 January	Meet the Teacher drop-in sessions (1.00-3.00pm)
<b>3 February</b>	<b>First day - Term 1 Begins</b>
3 February	Pōwhiri to welcome new families/students - 9.00am
<b>6 February</b>	<b>Waitangi Day (Public Holiday - school closed)</b>
11 February	Hui-ā-whānau (Parent - Teacher information meetings)
10-12 March	Hukanui Marae Trips
<b>11 April</b>	<b>Staff Only Day - Government approved curriculum focus day</b>
11 April	Last Day of Term 1

## On arrival to school

\*Hang your bag on the hooks outside the classroom

\*Choose to stay inside or play on the playground

\*When the music plays, come back to class for whānau time.



## Let's be SUNSMART

Particularly in term 1 and 4, we recommend you apply sunblock before coming to school and bring a hat for outside play.



## Whānau Time?

It is important for your children to arrive at school by 8.40am so they can be a part of this 'connection' time. You are welcome to join them for whānau time.



## Treats at school

We already have a birthday ritual in place so that your child has the opportunity to have their moment and be celebrated. Therefore, please refrain from bringing in any lollies or treats to share. We do have food allergies in our class and need to keep tamariki safe.

## Stationery



Stationery lists are loaded on [Officemax Site](#)

1. Select our school
2. Select your child's learning space
3. Select their teacher

EG: Kererū Tahi (Year 1/2) - Teresa, Sara or Donna

Please bring in all books as they are needed for different subjects.

## What do I need to bring to school each day?

- A lunch box packed with a healthy snack, morning tea and lunch
- A water bottle
- A hat and sunscreen
- A book bag
- A change of clothing
- Your stationery - see opposite



**As we have plenty of resources here at school, we recommend that toys and Pokemon cards stay at home to prevent loss or damage.**

**Email:** Please feel free to come and see us in the Kererū Tahi Learning Community if you have any queries or just want to say hello! We are also able to be contacted via email as follows:

[teresa@teaomarama.school.nz](mailto:teresa@teaomarama.school.nz) [sara@teaomarama.co.nz](mailto:sara@teaomarama.co.nz) [donna@teaomarama.school.nz](mailto:donna@teaomarama.school.nz)