

Welcome to 2024!

We are really excited about you being a part of our Kererū Tahi learning community this year. What an exciting journey we have ahead of us! We look forward to building relationships with you and supporting and encouraging you in your learning journey.

Meet your Kaiako...



Kia ora, I'm Bridget.

I'm looking forward to being in Kererū Tahi this year. I grew up in Kawerau, moving to Hamilton at the end of my primary school years.

I completed my schooling in Hamilton and studied at Waikato University (psychology and then education). I have lived in the Rotoruna/Flagstaff area for the last 18 years and have two daughters, both at University.



Kia Ora, I'm Keryn!

I originally come from Auckland but have lived in Hamilton for a number of years. My husband and I have two beautiful boys who attend Te Ao Mārama School. As a family we enjoy bush walks, going to the beach, traveling and exploring different parts of NZ in our motorhome. I am really excited to get to know you and your tamariki and engage them in fun, learning opportunities.



Kia ora, I'm Donna!

I grew up in Kawerau and studied at Waikato University. My husband Jason and I have three amazing children and a beautiful Birman cat, Emmy. I love spending time with my family, going to the beach, reading and art & craft. I'm looking forward to a great year of learning and fun with you!



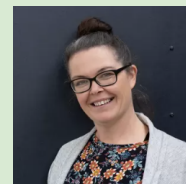
Hello I'm Rebecca.

I'm excited to be joining Kererū Tahi every second Friday for Keryn. I was born and raised in the Waikato and have over 10 years teaching experience. I enjoy spending time with my young son, husband and our dog Millie. In my spare time I love trying out new recipes, reading a good book, or catching up with friends and family. I have a passion for the arts, especially drama for learning. I love giving students the opportunity to use their imagination to problem solve and explore different possibilities in their learning.

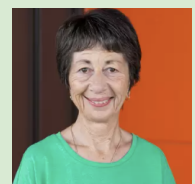
Meet our amazing Inclusive Learning Assistants who will also be working with your Tamariki and supporting them while they are learning.



Kia ora, I'm Kylie!



Kia Ora, I'm Amy!



Kia ora, I'm Jimina!

A little bit of information...

Kererū Tahi is located in Kererū, at the end nearest to Pūkeko. We are a group of Year 1 & 2 students. Our lovely neighbours, Kererū Rua, are located at the other end nearest to the field and they are a group of Year 2/3 students. While we will largely remain 'down our end', there will be opportunities to collaborate and work together throughout the year!

When does school officially start?

We open on the 30th January 2024.

You are welcome to arrive at school from 8am and can be in our learning space with your teachers from 8:20am onwards for an 8.40am start.



How is the day structured?

- 8:00 - Children welcome on site (unsupervised)
- 8:20 - Families and students welcome in learning spaces
- 8:40 - Whānau Time
- 9:00 - Block 1
- 10:35 - Outside play (whole school)
- 11:00 - Block 2 (starting with Morning Tea)
- 12:45 - Outside play (whole school)
- 1:25 - Block 3 (starting with Lunch)
- 2:20 - Whānau Time
- 2:30 - Finish



On arrival to school

- *Hang your bag on the hooks outside the classroom
- *Check-in and complete your morning jobs (see the board)
- *Choose to stay inside or play on the playground
- *When the music calls, come back to class to start your day



Whānau Time?

It is important for your children to arrive at school by 8.40am so they can be a part of this 'connection' time. You are welcome to join them for whānau time at the start or end of the day. Choose to stay for the first 10 minutes of the school day or come early and sit in for the last 10 minutes of the day. You may even come to both!



Term Dates 2024	
Date	What's On
23 rd January	Class Placements for 2024 advised via email
24 th & 25 th January	Staff Only Days
25 th January	School Tour - <i>New families for 2024</i> - 1pm
25 th January	Optional 'Meet the Teacher drop-in' session - 1pm-3pm
Tues 30th January	First day - Term One begins. Pōwhiri welcome for new families/students
Tues 6th February	Waitangi Day Public holiday - School Closed
Tues 13 th February	Hui-ā-whānau (Student/Parent/Teacher connects)
Mon 19 th February	Transport Safety Week - Kids on Bikes, Ruben the Road Safety Bear
29 th February	New Parent - drinks and nibbles
29th March	Good Friday
1st April	Easter Monday
2nd April	Easter Tuesday (note: this is a school holiday for all NZ schools)
12 th April	Last Day of Term 1



Let's be SUNSMART

Particularly in term 1 and 4, we recommend you apply sunblock before coming to school and bring a hat for outside play.



Treats at school

We already have a birthday ritual in place so that your child has the opportunity to have their moment and be celebrated. Therefore, please refrain from bringing in any lollies or treats to share. We do have serious food allergies in our class and need to keep these tamariki safe.



Stationery



Stationery lists are loaded on [Officemax Site](#)

1. Select our school
2. Select your child's learning space
3. Select their teacher

EG: Kererū Tahi (Year 1/2) - Bridget, Keryn or Donna

What do I need to bring to school each day?

- A lunch box packed with a healthy snack, morning tea and lunch
- A water bottle
- A hat and sunscreen
- A book bag
- A change of named, spare clothing
- Your stationery - see below



As we have plenty of resources here at school, we recommend that toys and Pokemon cards stay at home to prevent loss or damage.

Email: Please feel free to come and see us in the Kererū Tahi Learning Community if you have any queries or just want to say hello! We are also able to be contacted via email as follows:

bridget@teomarama.school.nz keryn@teomarama.school.nz donna@teomarama.school.nz