



“Mā te huruhuru ka rere te manu” Creating opportunities for our learners to soar

Nau mai haere mai e te whānau o Kāhu Tahī
Welcome to the Kāhu Tahī learning community

We are really excited about you joining us in Kāhu Tahī this year. There will be many new learning opportunities and we can't wait to share these with you. On Thursday 25th January please feel free to come into school and meet us from 1.00-3.00pm. Kāhu Tahī is upstairs closest to the elevator.

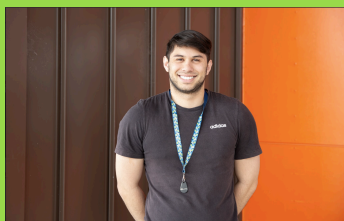


Alana Cramond
Classroom Teacher

I grew up in Hamilton and have taught at a number of schools for over 15 years.

I am passionate about preparing the older tamariki in their final years at primary school and encourage them to explore the range of extra-curricular roles and responsibilities on offer. I am excited to continue to be teaching in the Kāhu community in 2024.

In my spare time I enjoy travelling, baking and exploring new places through hiking and biking. I also love spending time with my friends and family.



Teina Neha
Classroom Teacher (Mon-Thurs)

I was born and raised in Kirikiriroa (Hamilton) and have been working as an ILA while completing my studies to become a teacher.

I am very excited to begin my journey as a teacher in Kāhu Tahī and build positive relationships with students and their whānau. I look forward to meeting everyone in the Kāhu community in 2024.

In my spare time I enjoy being active, going for hikes, running, playing any type of sport and spending time with friends and whānau.



Yana Tomich
Classroom Teacher (Fri)

I am so excited to be returning to the Kāhu space after taking a year to spend with my son.

I grew up in Auckland, but Hamilton has been home for the past few years. I live in Gordonton with my husband (Nick), son (Wills) and very energetic Vizsla (Ru) on our farm.

My extra curricular activities are a bit different now with a one year old in tow! We spend a lot of time at the library, pottering in the garden, and terrorising the dog.

Looking forward to meeting you all in the coming weeks.



Hayley Smith
Learning Assistant -
Literacy

I enjoy making special connections with the children under my care and I am so passionate about being a positive part of the growth in these children.

I am married to Dan and we have three children. In our spare time we love hanging out with our extended family and always look forward to our big camping trip each year at Ōhope!




Lucy Pedler
Learning Assistant -
Numeracy

My husband and I have two chatty daughters and two (less chatty) fur kids. We love exploring museums, libraries, playgrounds and parks. We're keen crafters, readers, geocachers and fairy garden explorers.

I feel so lucky to have an opportunity to help our beautiful tamariki grow and learn.

Useful Information

<p><u>When does school officially start?</u></p> <ul style="list-style-type: none"> • Term 1 start date: Tuesday 30 January 2024 • Term 1 end date: Friday 5th April 2024 • Tamariki welcome to arrive at school from 8am, with learning spaces opening from 8:20 am onwards 	<p><u>Stationery</u></p> <ul style="list-style-type: none"> • Your tamariki will need their stationery as soon as possible. Thank you to those of you who have already ordered through the school. If you still need information about stationery please contact the school office.
<p><u>BYOD</u></p> <ul style="list-style-type: none"> • B.Y.O.D (Bring your own device) is an integral part of the learning philosophy of Kāhu Tahī • As your child will be a student of Kāhu Tahī in 2024, we ask that you consider supporting your child with a device • If you wish to learn more about BYOD, check out our school website. All the information you require about BYOD is here 	<p><u>What does your child need to bring to school each day?</u></p> <ul style="list-style-type: none"> • They will need a lunch box packed with a snack, morning tea and lunch • A water bottle • A hat is highly recommended during Terms 1 and 4 • Please apply sunscreen before coming to school in Terms 1 and 4 (we also have sunscreen available in class)
<p><u>Communication</u></p> <ul style="list-style-type: none"> • Your child has a whānau teacher and this is your first point of contact • Feel free to come in and chat to the Kāhu Tahī community if you have any queries or just want to say 'hello' • Our website and facebook page have useful information for you. Please head to www.teaomarama.school.nz. Click the lines on the top right hand side for a drop down menu and choose the appropriate tab. 	<p><u>Hero</u></p> <ul style="list-style-type: none"> • The school communicates important messages and updates on your child's learning through the Hero app. Download the Hero app to receive updates. You will also be notified via email where you can follow links to view posts and updates on the Hero website 

 Term Dates 2024 	
Date	What's On
23 rd January	Class Placements for 2024 advised via email
24 th & 25 th January	Staff Only Days
25 th January	School Tour – <i>New families for 2024</i> - 1pm
25 th January	Optional "Meet the Teacher drop-in" session - 1pm-3pm
Tues 30th January	First day – Term One begins, Pōwhiri welcome for new families/students
Tues 6th February	Waitangi Day Public holiday – School Closed
Tues 13 th February	Hui-ā-whānau (Student/Parent/Teacher connects)
Mon 19 th February	Transport Safety Week - Kids on Bikes, Ruben the Road Safety Bear
29 th February	New Parent - drinks and nibbles
29th March	Good Friday
1st April	Easter Monday
2nd April	Easter Tuesday (note: this is a school holiday for all NZ schools)
12 th April	Last Day of Term 1

We look forward to sharing your child's learning journey with you in 2024. Please feel free to contact us with any further questions or ideas to support your child at Te Ao Mārama School.

alana@teaomarama.school.nz

teina@teaomarama.school.nz

yana@teaomarama.school.nz

Ngā mihi mahana
Alana, Teina, Yana, Hayley and Lucy