



Spotlight on

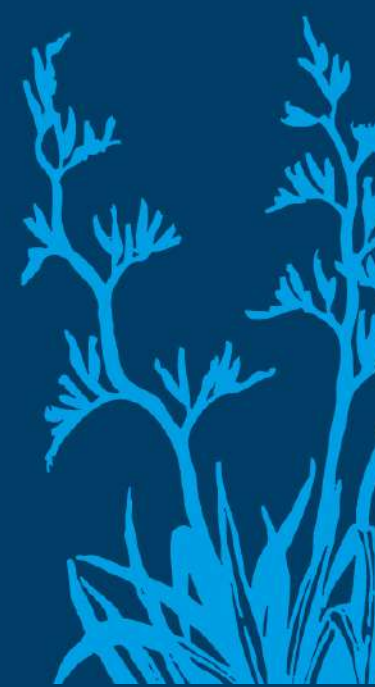
## LEARNING

...why we do what we do

# Collaborative Teaching



Te Ao Marama  
SCHOOL



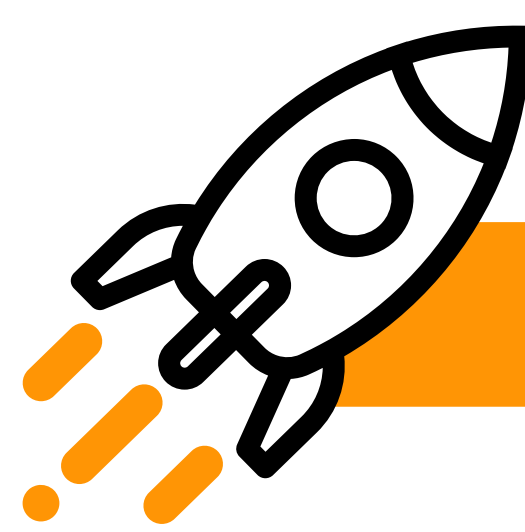
## What is

COLLABORATIVE  
TEACHING?

Collaborative teaching is 2 or more teachers working closely together to provide an effective teaching and learning programme. When teachers can work together, share the responsibility, share strengths and skills, and see one another in action, the learning is enhanced.

Students having access to 2 or more teachers have many advantages;

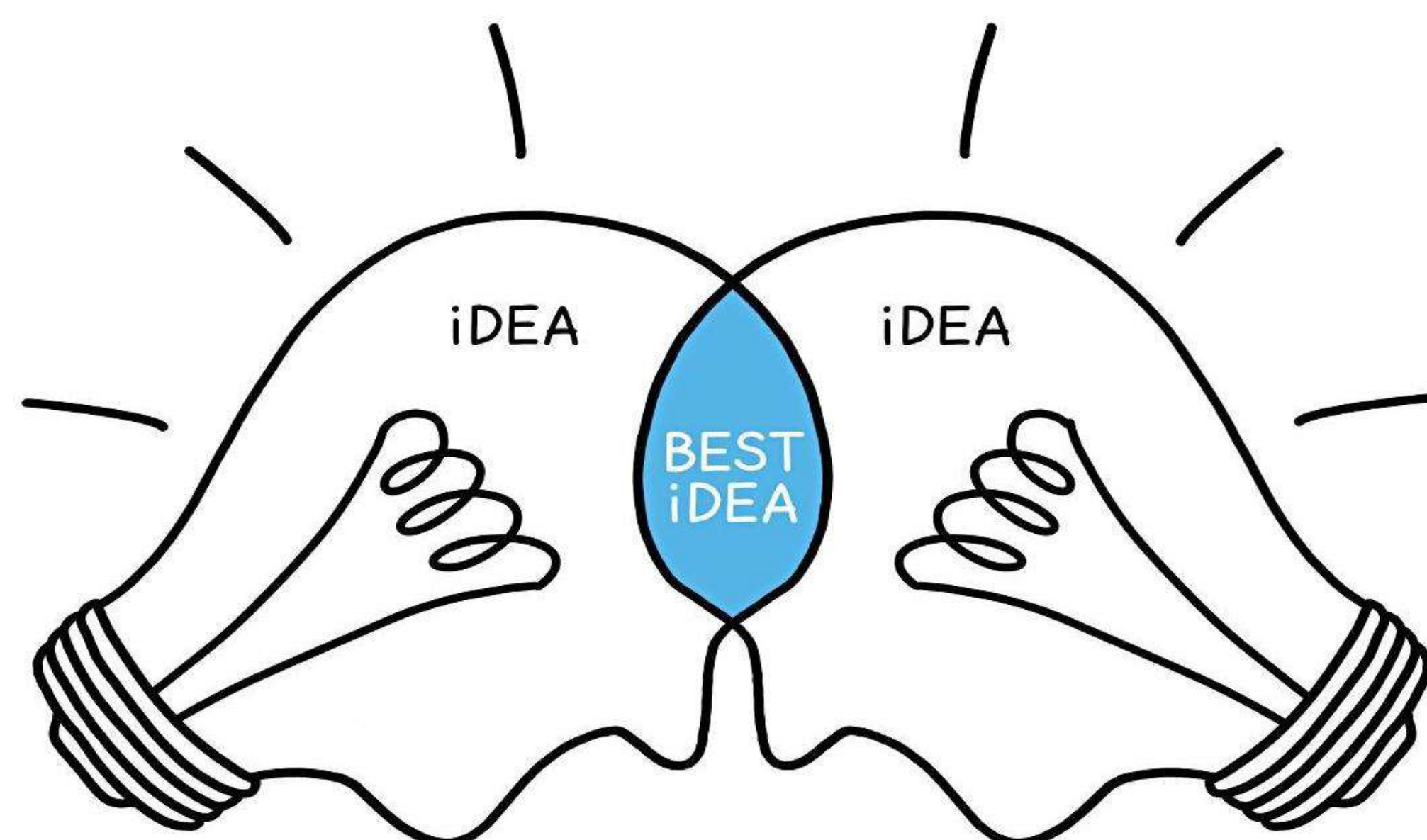
- More frequent interactions with teachers
- Greater differentiation of the class programme to support all learners, because there are now 2-3 teachers rather than 1 teacher trying to cater for an enormous range of abilities
- Increased collaboration between classmates and teachers
- More detailed analysis of each child's learning needs through the different perspectives of teachers
- Greater chance of each child forming a strong relationship with at least one of their teachers-
- Access to a range of teachers' strengths and passions, providing a richer, more well rounded curriculum
- Greater social development with more peers to interact and work with



## Why it's....

IMPORTANT

Simply put....two heads are better than one  
A significant driver from an educational point of view is our understanding of collective teacher efficacy (CTE) which refers to a staff's shared belief that through their collective action, they can positively influence student outcomes. CTE is ranked as the *number one* factor influencing student achievement. According to the Visible Learning Research (see research links), CTE is beyond three times more powerful and predictive of student achievement than socio-economic status. It is more than triple the effect of home environment and parental involvement. It is greater than three times more likely to influence student achievement than student motivation and concentration, persistence, and engagement.



Links to our

## VALUES

We want our learners to be **confident**, **creative**, **curious**, **collaborative**, and **community-minded**.

These core values can be greatly enhanced in a collaborative environment, with a wide range of skills and strengths from different teachers and the increased capacity to design learning experiences with greater flexibility.



Links to the

## RESEARCH

John Hattie 'Collective teacher efficacy'  
<https://bit.ly/2MjvT2w>

Tony Grey; 'The Quo Has Lost Its Status'  
<https://bit.ly/2xBvMLo>



It's all about

## RELATIONSHIPS

There is a greater chance of each child being able to form a strong relationship with at least one of their teachers, and greater social development with more peers to interact and work with.



Visit us at [www.teaomarama.school.nz](http://www.teaomarama.school.nz)